



!tipo_vivienda : Villa

Localité : Orihuela

Chambres : 3

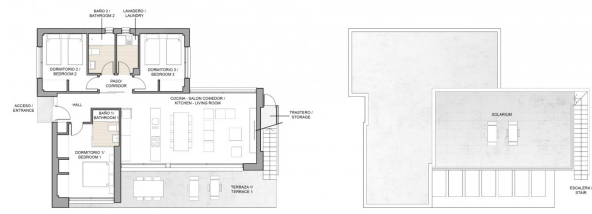
Salles de bains : 2

Piscine : Non

Surface habitable : 106 m²

Surface du terrain : 320 m²





PLANTA BAJA / GROUND FLOOR

SOLARIUM

Superficie construida / Built area

PROPIEDAD / PROPERTY	105.10 m ²
TERRAZAS / TERRACES	27.26 m ²
SOLARIUM	37.47 m ²
TOTAL CONSTRUICION / BUILT AREA	169.83 m²

Planta Baja / Ground Floor
Superficies utiles / Useful surface

ACCESO / ENTRANCE	1.30 m ²	LANCERO / LAUNDRY	3.90 m ²
HALL	5.80 m ²	PASO / CORRIDOR	2.50 m ²
DORMITORIO 1 / BEDROOM 1	12.00 m ²	DORMITORIO 2 / BEDROOM 2	9.80 m ²
BANO 1 / BATHROOM 1	3.52 m ²	TRANSFER / STORAGE	1.75 m ²
COCINA / KITCHEN / CORREDOR / HITCHEN / LIVING ROOM	30.80 m ²	TERRAZA / TERRACE	27.26 m ²
DORMITORIO 2 / BEDROOM 2	10.20 m ²	SOLARIUM	37.47 m ²
BANO 2 / BATHROOM 2	3.34 m ²	ESCALERA / STAIR	4.02 m ²

