



Tipo vivienda : Villa

Piscina : Sí

Vivienda : 449 m²

Localidad : Benitachell

Parcela : 800 m²

Dormitorios : 4

Baños : 3

✓ Cerca del mar

✓ Chimenea

✓ Trastero

✓ Terraza

Modern sea view villa for sale in Benitachell, Cumbre del Sol

This modern villa in the beautiful Cumbre del Sol location in Benitachell offers everything you need for luxury living on the Costa Blanca. With impressive sea views and excellent accessibility to all amenities, this is the ideal place to enjoy Mediterranean living. The villa is just 5 kilometres from the charming old town of Benitachell and 6.5 kilometres from the popular resort of Moraira. The idyllic Cala Moraiç beach is 2.2 kilometres away, while the international school is just 3 kilometres.

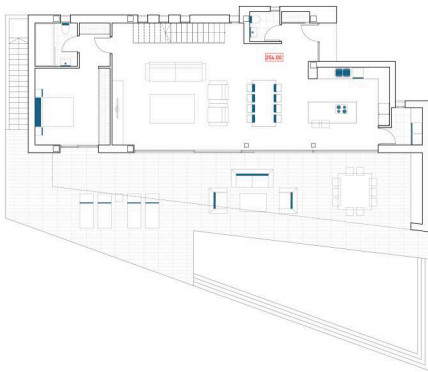
This exclusive property stands out for its modern design, fantastic sea views, plenty of light, and stylish elements. The house is spread over two floors and offers plenty of space and comfort. On the ground floor there is a spacious living-dining room with a cosy fireplace and large windows that provide plenty of natural light. The open, modern kitchen is fully equipped and there is a practical utility/laundry room. There is also a spacious bedroom with en-suite bathroom and, finally, a guest toilet. An internal staircase leads to the upper floor, where there are three bedrooms. One bedroom has its own en-suite bathroom, while the other two share a bathroom.

The outdoor space is ideal for fully enjoying the Mediterranean climate. A lovely swimming pool with generous sun terrace offers the perfect place to relax, while the solarium offers spectacular sea views. Finished with high-quality materials, the property exudes modern luxury, with attention to comfort and elegance.

With fantastic sea views from all rooms and a prime location, this villa is a unique opportunity. Don't let this dream home pass you by and schedule a viewing today. Your luxury life on the Costa Blanca awaits you!

El precio mostrado no incluye impuestos ni gastos de compra / La oferta está sujeta a errores, cambios de precio, disponibilidad, omisión y/o retirada del mercado sin previo aviso / Muebles y contenidos según acuerdo personalizado y no según las fotos de la





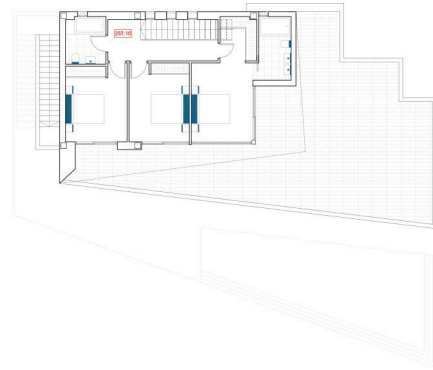
133.46m²
57.38m²
2.50m²
7.15m²

52.98m²
42.00m²

78.17m²
23.17m²
1 8.97m²
43.09m²

101.34m²

ES
37.76m²
23.72m²
11.82m²



133.46m²
57.38m²
2.50m²
7.15m²

52.98m²
42.00m²

78.17m²
23.17m²
1 8.97m²
43.09m²

101.34m²

ES
37.76m²
23.72m²
11.82m²