

Tipo vivienda : Villa

Piscina : Sí

Vivienda : 111 m²

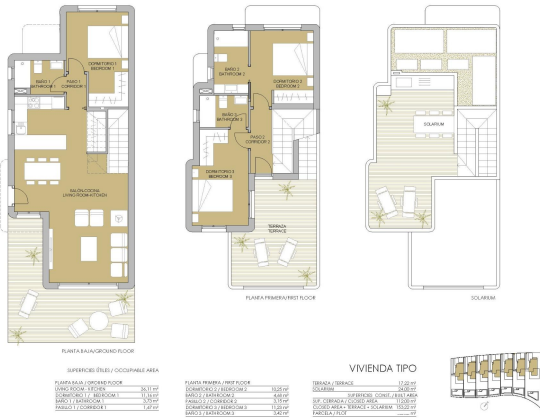
Localidad : Pilar de la Horadada

Parcela : 280 m²

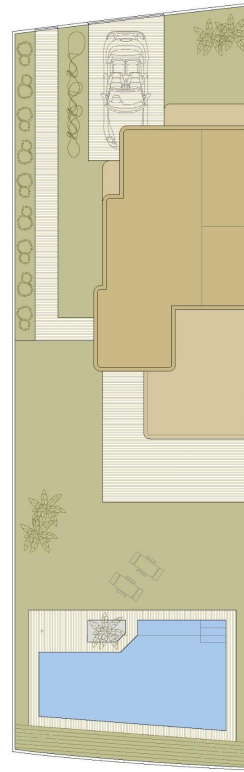
Dormitorios : 3

Baños : 3





PLANO SUJETO A MODIFICACIONES DE ÍNDICE TÉCNICA O JURÍDICA. LAS SUPERFICIES SON APROXIMATIVAS / PLAN SUBJECT TO POSSIBLE MODIFICATIONS FOR TECHNICAL OR LEGAL REASONS. THE MEASUREMENTS SHOWN ARE APPROXIMATE



VIVIENDA TIPO V.1

SUPERFICIES ÚTILES / OCCUPABLE AREA

PLANTA BAJA / GROUND FLOOR

LOBBY ROOM / RECEPTION	34.11 m ²
COMEDOR / DINING ROOM 1	11.14 m ²
BANIO / BATHROOM 1	3.79 m ²
PASILLO / CORRIDOR 1	1.47 m ²

PLANTA PRIMERA / FIRST FLOOR

COMEDOR / DINING ROOM 2	15.26 m ²
BANIO / BATHROOM 2	4.45 m ²
PASILLO / CORRIDOR 2	3.15 m ²
COMEDOR / DINING ROOM 3	11.23 m ²
BANIO / BATHROOM 3	3.42 m ²

TERRAZA / TERRACE	17.22 m ²
SOLARIUM	24.00 m ²

SUPERFICIES CONSTR. / BUILT AREA

SUF. CERRADA / CLOSED AREA	119.00 m ²
CUBIERTA AREA + TERRAZA + SOLARIUM	159.92 m ²

PARCELA / PLOT	286.04 m ²
----------------	-----------------------



PLANO SUJETO A MODIFICACIONES DE ÍNDICE TÉCNICA O JURÍDICA. LAS SUPERFICIES SON APROXIMATIVAS / PLAN SUBJECT TO POSSIBLE MODIFICATIONS FOR TECHNICAL OR LEGAL REASONS. THE MEASUREMENTS SHOWN ARE APPROXIMATE

