



Property type : Villa

Location : Moraira

Bedrooms : 3

Bathrooms : 3

Swimming pool : Yes

Garden : Private

House area : 487 m²

Plot area : 1000 m²

- ✓ Close to sea
- ✓ Airconditioning
- ✓ Utility room
- ✓ Terrace

This Villa is one of the six exclusive residences of the Bay View residential project, designed to offer luxury, privacy, and a connection to the natural surroundings. This model combines contemporary architecture with a Mediterranean touch, offering panoramic views, exceptional design, and functionality.

The ground floor of the villa features a spacious living room, dining area, kitchen, a master bedroom with an en-suite bathroom and walk-in closet, as well as a guest restroom. The living area seamlessly connects to the outdoors through expansive covered terraces, a private pool, and beautiful Mediterranean gardens.

The first floor includes two en-suite bedrooms with walk-in closets, offering breathtaking views.

Specifications

PLOT: 1.000,00m²

HOUSE: 319,41m²

TERRACE: 83,72m²

PORCHE OVER PARKING - Optional: 40,11m²

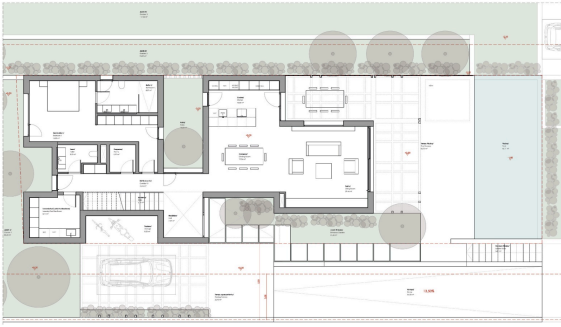
SWIMMING POOL: 10x4m

ORIENTATION: South - East

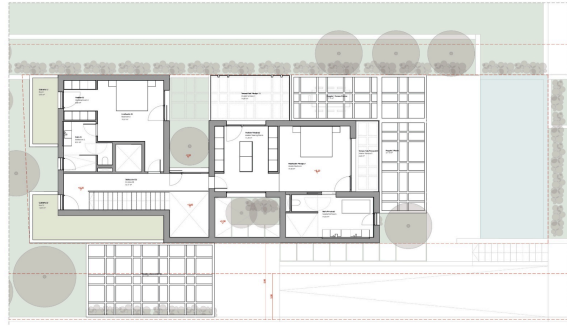




Distribution plan
Ground floor



Distribution plan
First floor



Distribution plan
Pool

