



Property type : Villa

Swimming pool : Yes

House area : 395 m²

Location : Moraira

Plot area : 814 m²

Bedrooms : 4

Bathrooms : 3

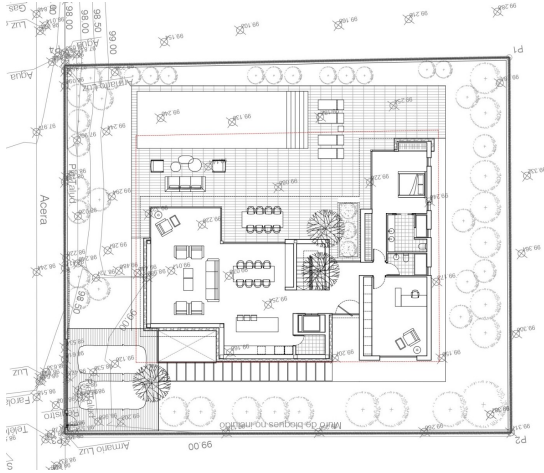
✓ Lift

✓ White goods

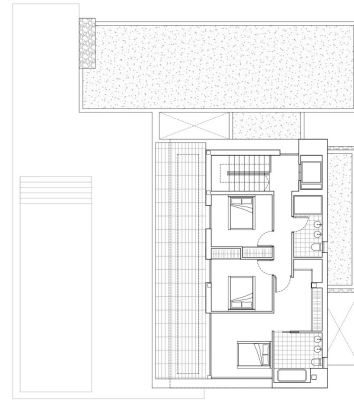
✓ Airconditioning

This stunning villa is to be built in the Benimeit area of Moraira, just a 7 minute drive to the beach and town centre. The villa will be distributed over 3 floors with the main living level having direct access to the pool terrace. The main living level consists of a spacious open plan living area including a open kitchen with pantry and island, a double bedroom with en-suite bathroom, a guest toilet and a spacious office which could be a 5th bedroom. The first floor consists of a double bedroom with en-suite bathroom and dressing area, two further double bedrooms and a shared bathroom. The 94m² basement consists of a large room which could be used as a wellness room/gym, a bathroom, laundry, technical room and an English patio. For your convenience the three floors have a connecting staircase and a lift, The spacious pool terrace has a covered area for shade and a luxury 12 x 4m pool with pool shower.- Key points:- Top quality tiles, inside and outside- Lacquered aluminium doors and windows, clients choice of colour- Double glazed security windows with Climalit, electric blinds in the bedrooms- 2.3m high internal doors finish to be selected- Luxury kitchen to be chosen by client- Railings inside and outside to be glass- Bathrooms to be chosen by client- Underfloor heating by heatpump- Air conditioning in living room and bedrooms- Pool to be supplied with steps, 2 LED lights and a pool shower hot/cold- For further information about this project please do not hesitate to contact us- Distances- Small shopping centre 1.1km- Town centre, beach and marina 2.9km- Golf 3.9km- Motorway access in Benissa 6.9km





Elemento	Cantidad
PLANTA BAJA	151.20M ²
ENTRADA	25.20M ²
ESTRUCO	25.20M ²
VOLADIZOS	15.00M ²
JARDINERIA	4.80M ²
TERRAZA	180.20M ²
PUJOL	88.00M ²
PLANTA ALTA	88.00M ²
BIENES	88.00M ²
PERGOLA	28.00M ²
VOLADIZOS	15.00M ²
TERRAZA	13.87M ²
PLANTA BAJA	88.00M ²
VIGERIA	88.00M ²
VOLADIZOS	2.00M ²
PATIO INGRES	8.00M ²
ACEROS EXTERIORES	44.87M ²
PORR. SUP	44.87M ²
ACEROS	58.80M ²



Elemento	Cantidad
PLANTA BAJA	161.20M ²
ENTRADA	25.20M ²
ESTRUCO	25.20M ²
VOLADIZOS	15.00M ²
JARDINERIA	4.80M ²
TERRAZA	180.20M ²
PUJOL	88.00M ²
PLANTA ALTA	88.00M ²
BIENES	88.00M ²
PERGOLA	28.00M ²
VOLADIZOS	15.00M ²
TERRAZA	13.87M ²
PLANTA BAJA	88.00M ²
VIGERIA	88.00M ²
VOLADIZOS	2.00M ²
PATIO INGRES	8.00M ²
ACEROS EXTERIORES	44.87M ²
PORR. SUP	44.87M ²
ACEROS	58.80M ²