



Property type : Villa

Location : Calpe

Bedrooms : 4

Bathrooms : 4

Swimming pool : No

Orientation : N/A

Views : N/A

Parking : Carport

House area : 217 m²

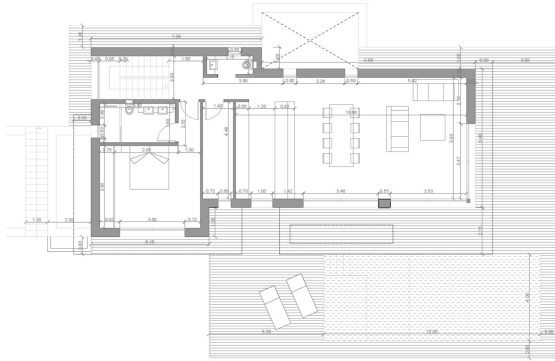
Plot area : 1000 m²

Sale: SUP Empedrola C 11
Plot + Project - Construction Project - Start of construction: October 2024

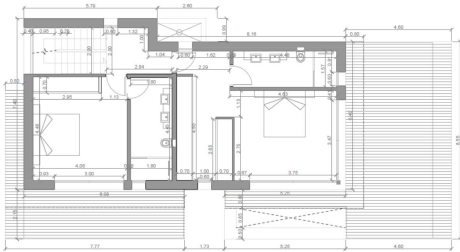
Details: 1000m² ; 4 bedrooms ; 4 bathrooms; large terrace; swimming pool
Perfect sunny location with panoramic and mountain views, Prime location

Sale Price: 997.000.- Euro

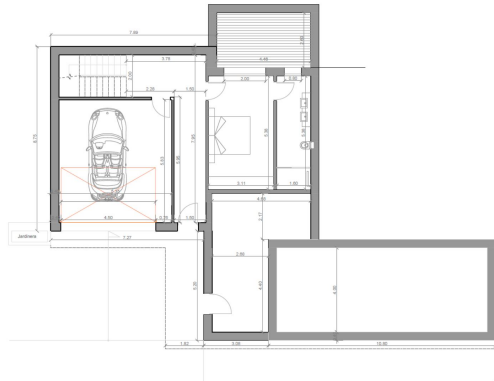




PLANTA BAJA



PLANTA PRIMERA



PLANTA SÓTANO