



Property type : Villa

Swimming pool : No

House area : 180 m²

Location : Calpe

Plot area : 1000 m²

Bedrooms : 3

Bathrooms : 3

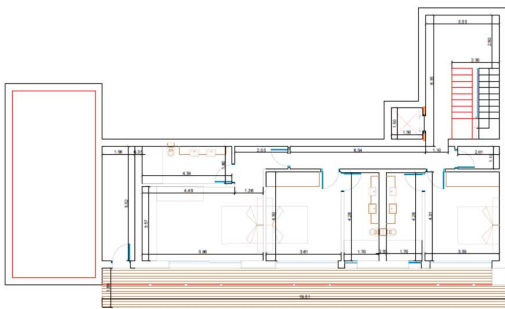
A large plot of 1,000m² is for sale with a beautiful and modern project of a dream house, in the Empedrola SUP II urbanization of Calpe with perfect views of the Peñón de Ifach and the sea.

The land is clean and ready to build a villa of 180m² plus terraces. The project idea includes a swimming pool, 3 bedrooms plus spacious dining/living spaces and kitchen.

As it is a project, we can adapt it to the needs and tastes of the client.

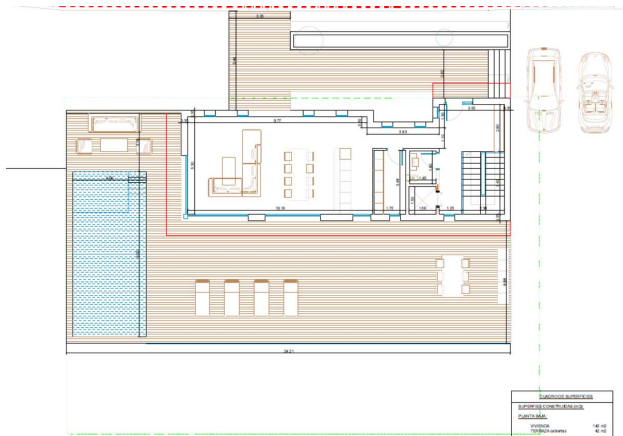
Your dream home awaits you, contact us now for more information.





PLANTA BAJA

DESCRIPCIÓN DE SUPERFICIES	
DESCRIPCIÓN DE SUPERFICIES	
CLAVICULA	142,00
ESTRADA	82,00
PLANTA BAJA	224,00
ESTRADA (CONSTR.)	188,00
ESTRADA	36,00
TOTAL SUP. CONSTR. VIVIENDA	224,00



PLANTA ALTA

DESCRIPCIÓN DE SUPERFICIES	
DESCRIPCIÓN DE SUPERFICIES	
CLAVICULA	142,00
ESTRADA	82,00
PLANTA ALTA	224,00
ESTRADA (CONSTR.)	188,00
ESTRADA	36,00
TOTAL SUP. CONSTR. VIVIENDA	224,00