



Immobilienart : Villa

Wohnort : Pilar de la Horadada

Schlafzimmer : 3

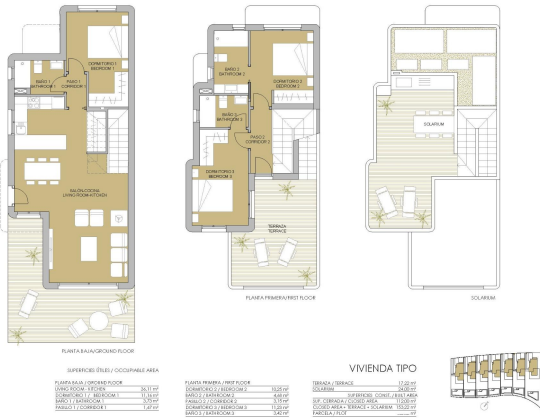
Badezimmer : 3

Schwimmbad : Ja

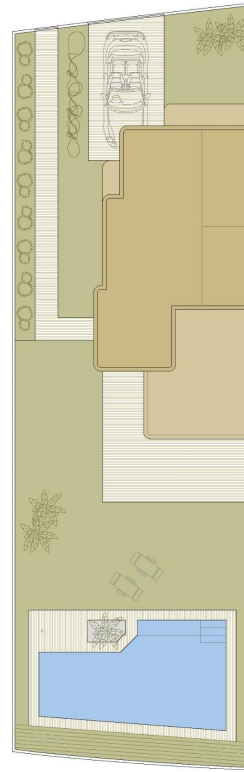
Bau Fläche : 111 m²

Grundstück : 280 m²





PLANO SUJETO A MODIFICACIONES DE ÍNDICE TÉCNICO O JURÍDICO. LAS SUPERFICIES SON APROXIMATIVAS / PLAN SUBJECT TO POSSIBLE MODIFICATIONS FOR TECHNICAL OR LEGAL REASONS. THE MEASUREMENTS SHOWN ARE APPROXIMATE



VIVIENDA TIPO V.1

SUPERFICIES ÚTILES / OCCUPABLE AREA

PLANTA BAJO / GROUND FLOOR	
DORMITORIO / BEDROOM	34.11 m²
BANÍO / BATHROOM 1	11.14 m²
BANÍO / BATHROOM 2	3.79 m²
PASILLO / CORRIDOR 1	1.47 m²

PLANTA PRIMERA / FIRST FLOOR	
DORMITORIO 2 / BEDROOM 2	15.26 m²
BANÍO 2 / BATHROOM 2	4.45 m²
PASILLO 2 / CORRIDOR 2	3.15 m²
DORMITORIO 3 / BEDROOM 3	11.23 m²
BANÍO 3 / BATHROOM 3	3.42 m²

TERRAZA / TERRACE	
TERRAZA	17.22 m²
SOLARIM	24.00 m²

SUPERFICIES CONSTR. / BUILT AREA	
SUF. CERRADA / CLOSED AREA	119.00 m²
CURSED AREA - TERRACE + SOLARIM	159.92 m²
PARCELA / PLOT	286.04 m²



PLANO SUJETO A MODIFICACIONES DE ÍNDICE TÉCNICO O JURÍDICO. LAS SUPERFICIES SON APROXIMATIVAS / PLAN SUBJECT TO POSSIBLE MODIFICATIONS FOR TECHNICAL OR LEGAL REASONS. THE MEASUREMENTS SHOWN ARE APPROXIMATE

